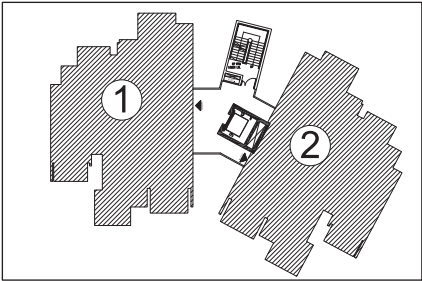


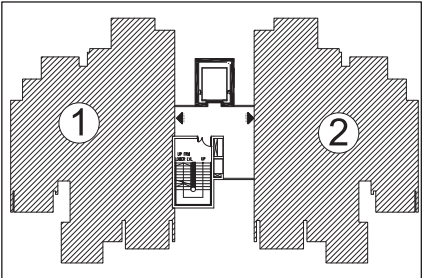
3 BHK - MID RISE
UNIT AREA: 2564 sqft



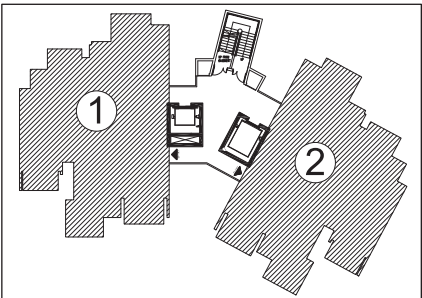
TYPICAL FLOOR PLAN OF 3BHK IN MID-RISE



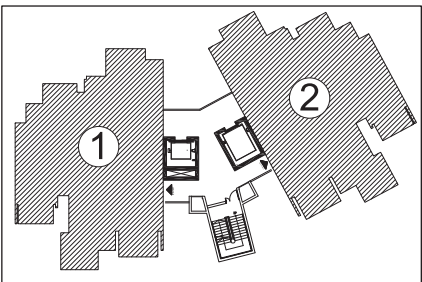
D14



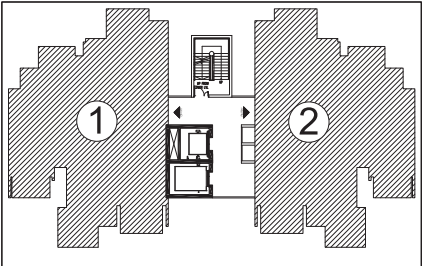
D2,D5,D8,D26



D3,D4,D9,D12,D13,D15,D19,D20,D21,D22

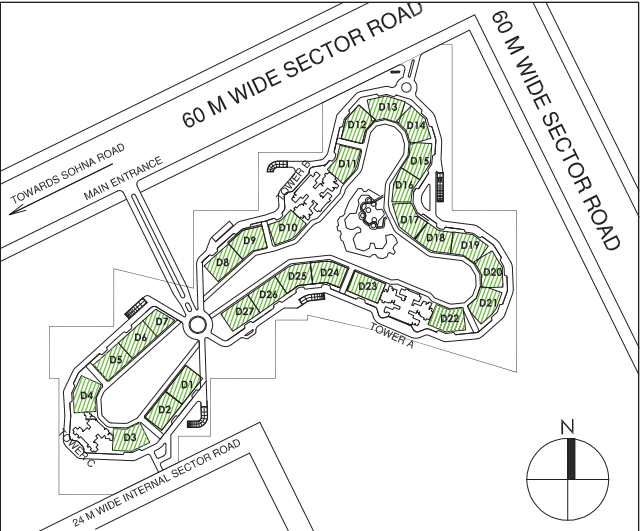


D10,D11,D16,D17,D18,D24,D25



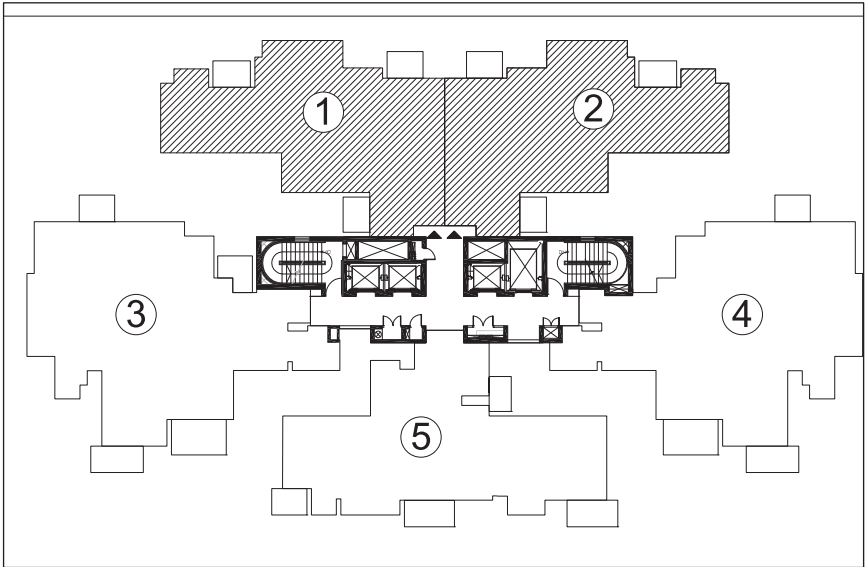
D23

LOCATION OF TYPICAL 3BHK IN MID-RISE

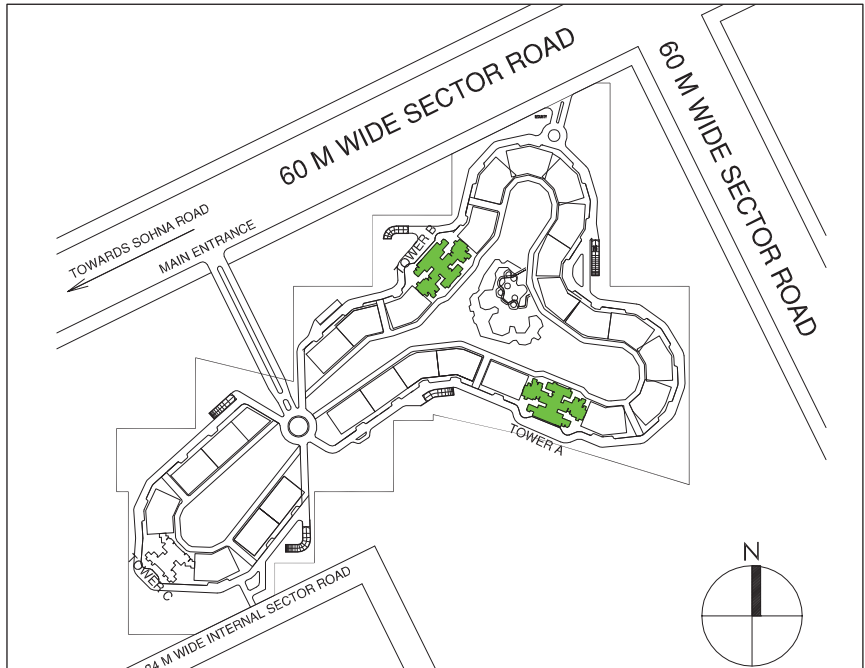




TYPICAL FLOOR PLAN OF 3BHK IN TOWER A & B

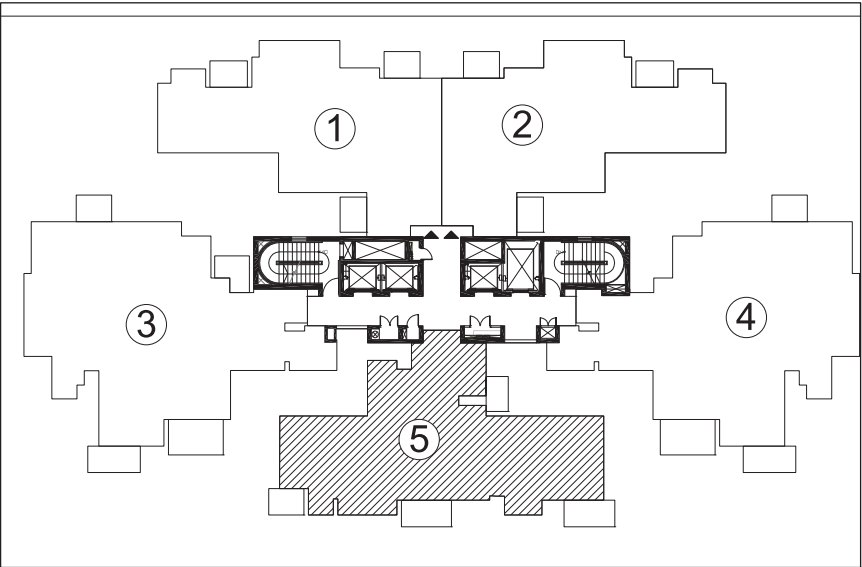


LOCATION OF TYPICAL 3BHK IN TOWER A & B

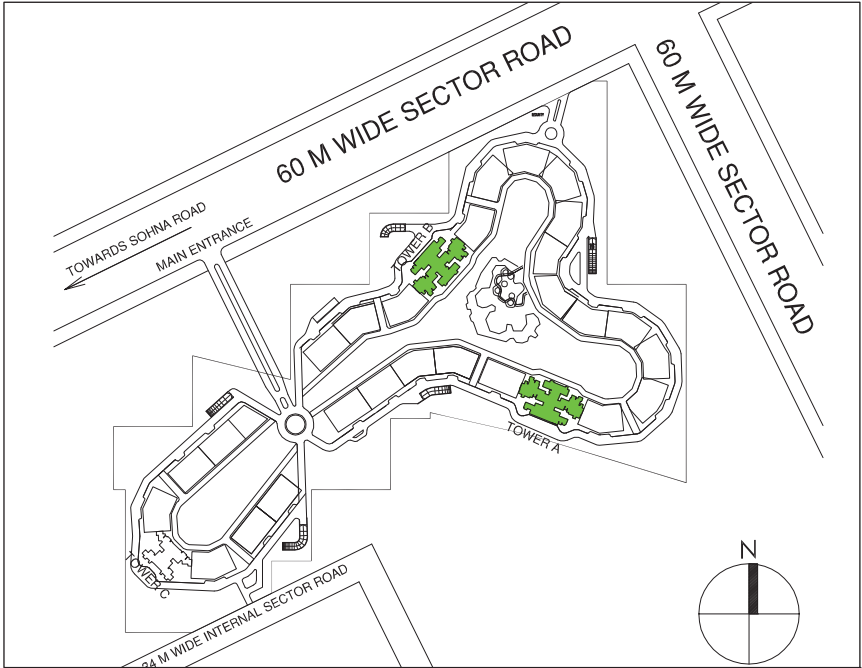




TYPICAL FLOOR PLAN OF 3BHK IN TOWER A & B

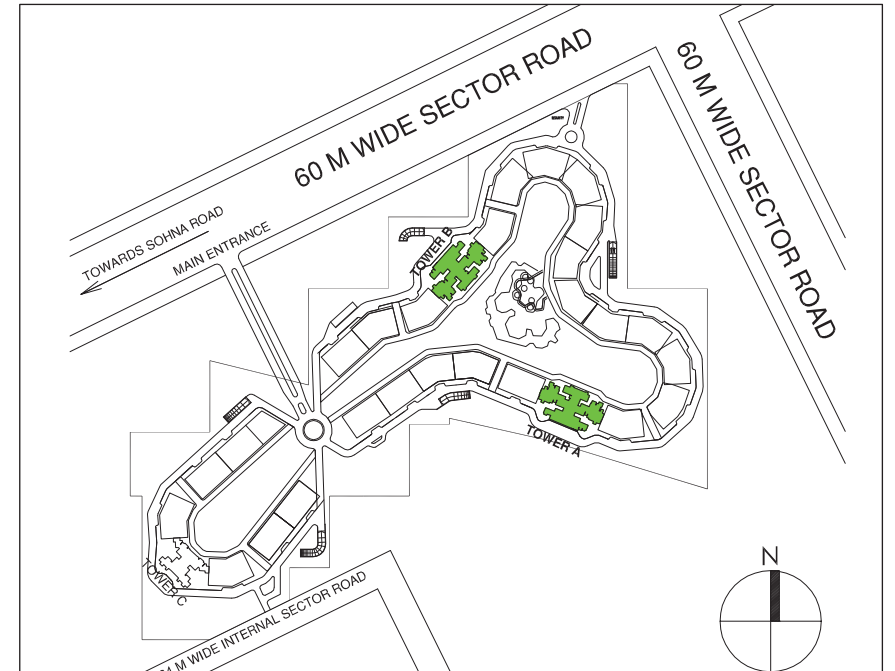
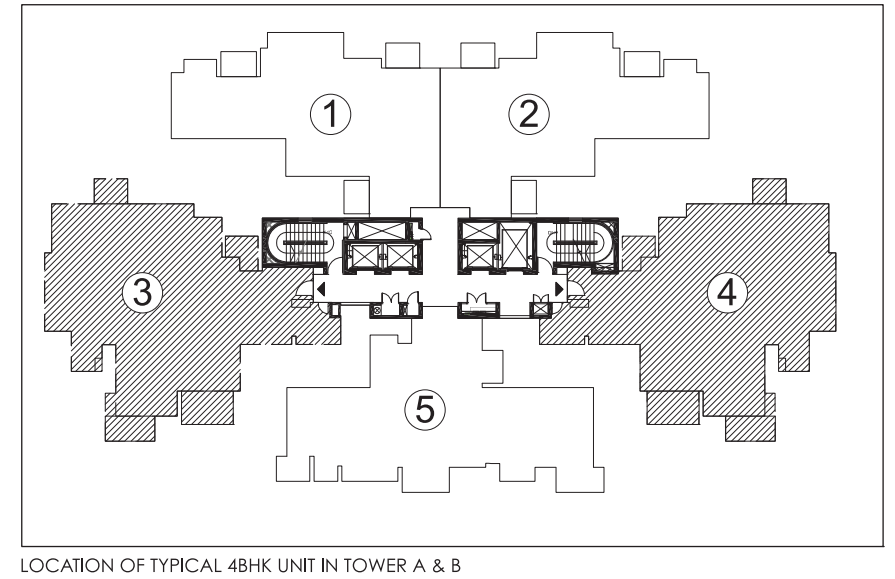
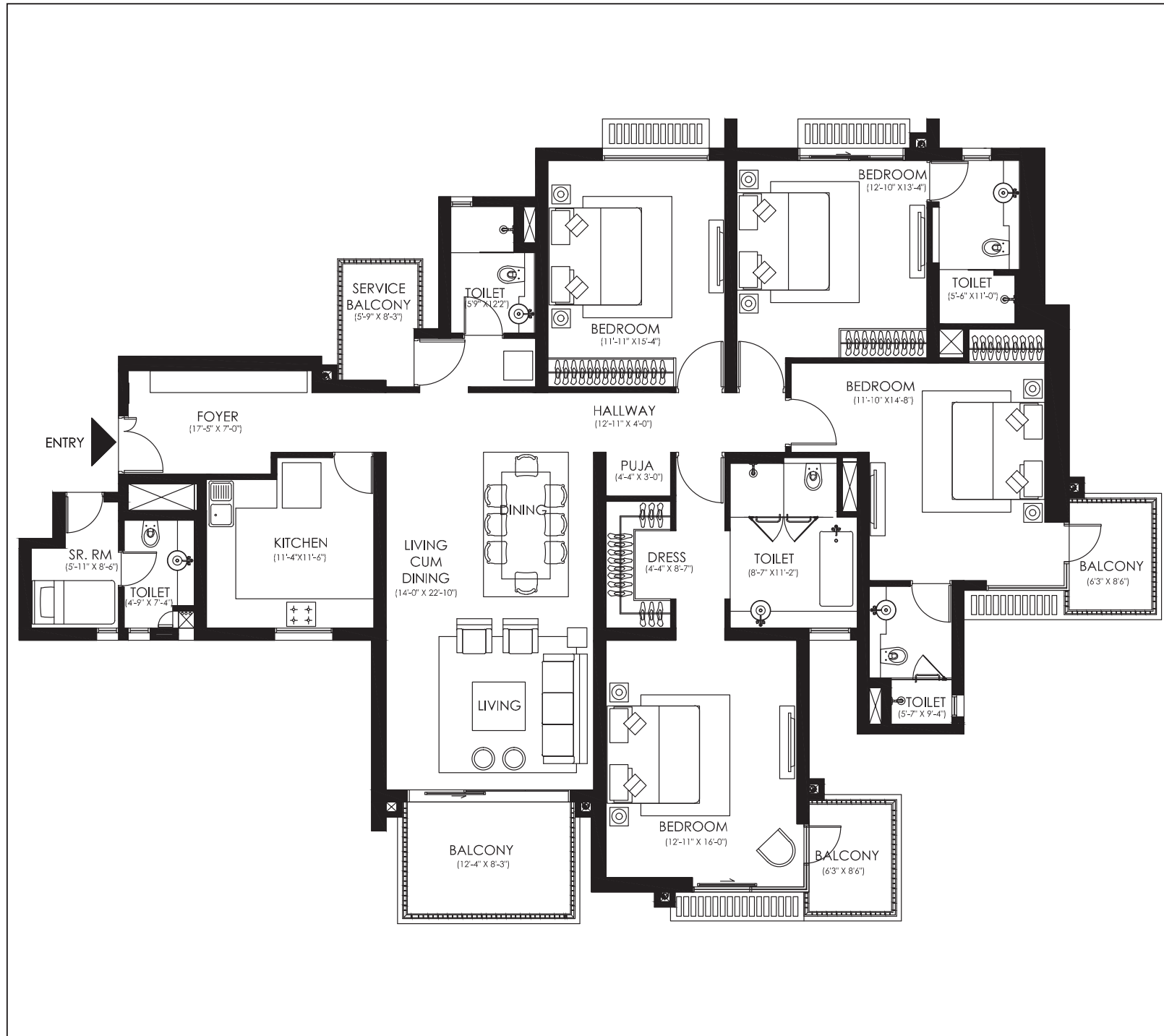


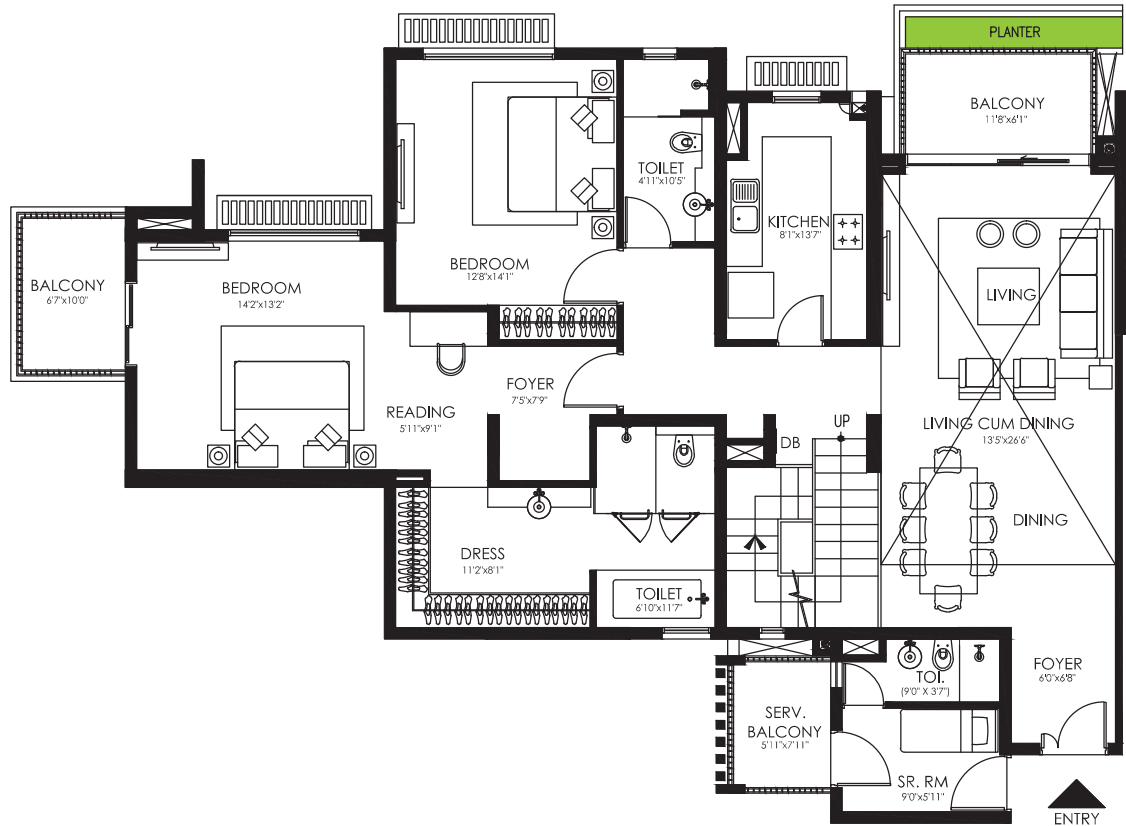
LOCATION OF TYPICAL 3BHK IN TOWER A & B



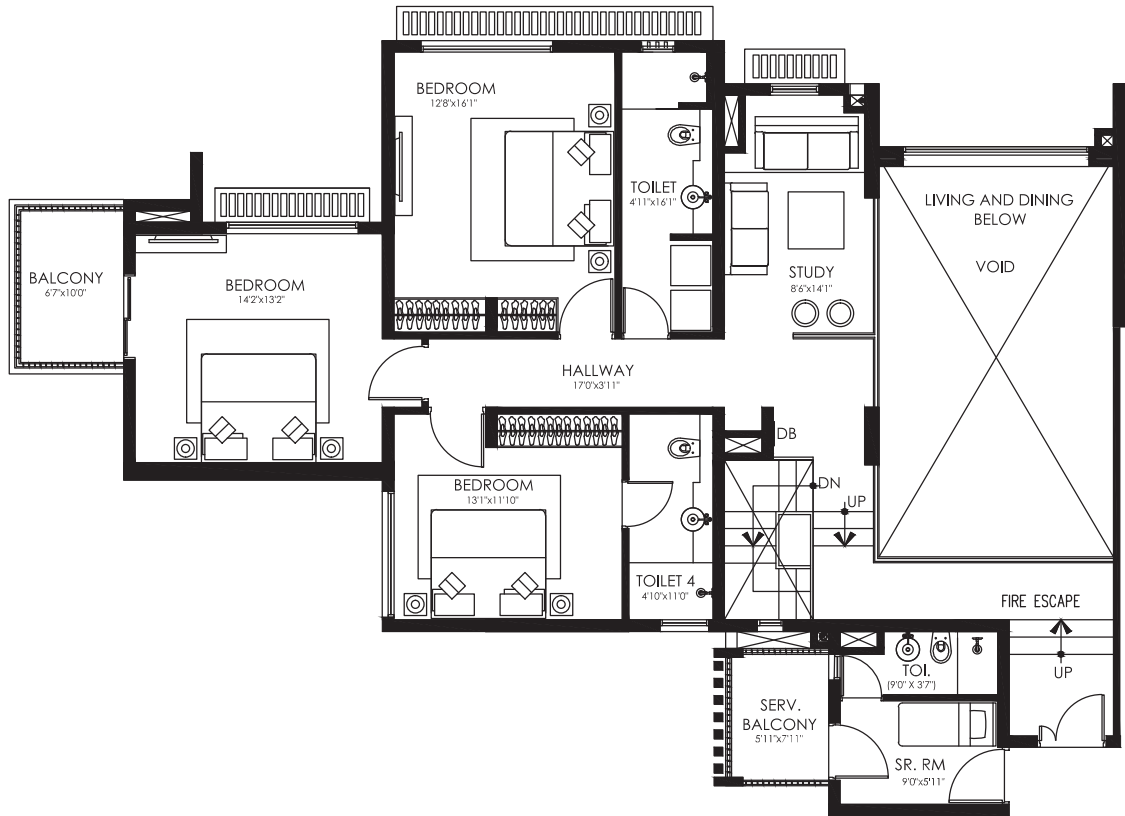
UNIT AREA: 3130 sqft

The logo for ireo Victory Valley features the word "ireo" in a dark brown, lowercase sans-serif font, preceded by a stylized orange and yellow sunburst icon. Below this, the words "VICTORY VALLEY" are written in a large, blue, serif font. Underneath, the tagline "LIFESTYLE ELEVATED" is in a smaller, blue, sans-serif font. To the right of the text is a graphic of a stylized mountain range composed of vertical blue lines of varying heights, with a green line representing a peak or trail. A green swoosh underline is positioned beneath the tagline.

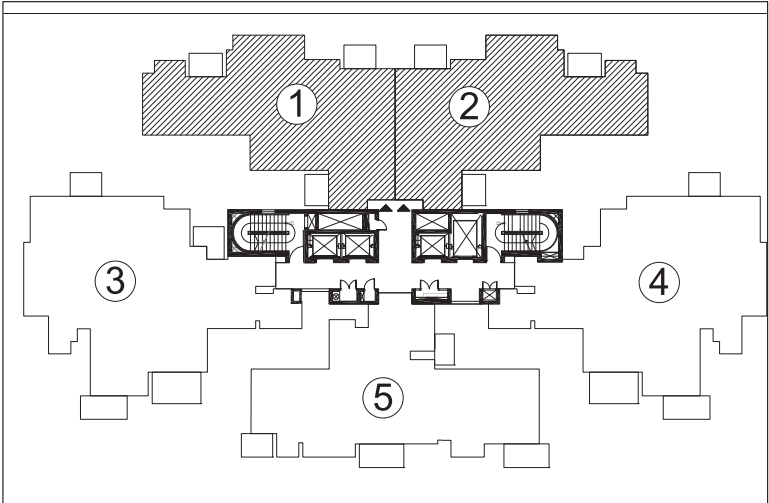




TYPICAL LOWER LEVEL FLOOR PLAN OF DUPLEX IN TOWER - A & B



TYPICAL UPPER LEVEL FLOOR PLAN OF DUPLEX IN TOWER - A & B



LOCATION OF TYPICAL DUPLEX - TOWER A & B

